



Making Cars
Smart

Driving the future today.

Drive the future now with the world's smartest car technology. Technology that's so intelligent that you will forget how daunting driving a car used to be.

It is time to evolve and unlock limitless possibilities with Anton Smart Cars, a perfect blend of beauty and brains.



17:48



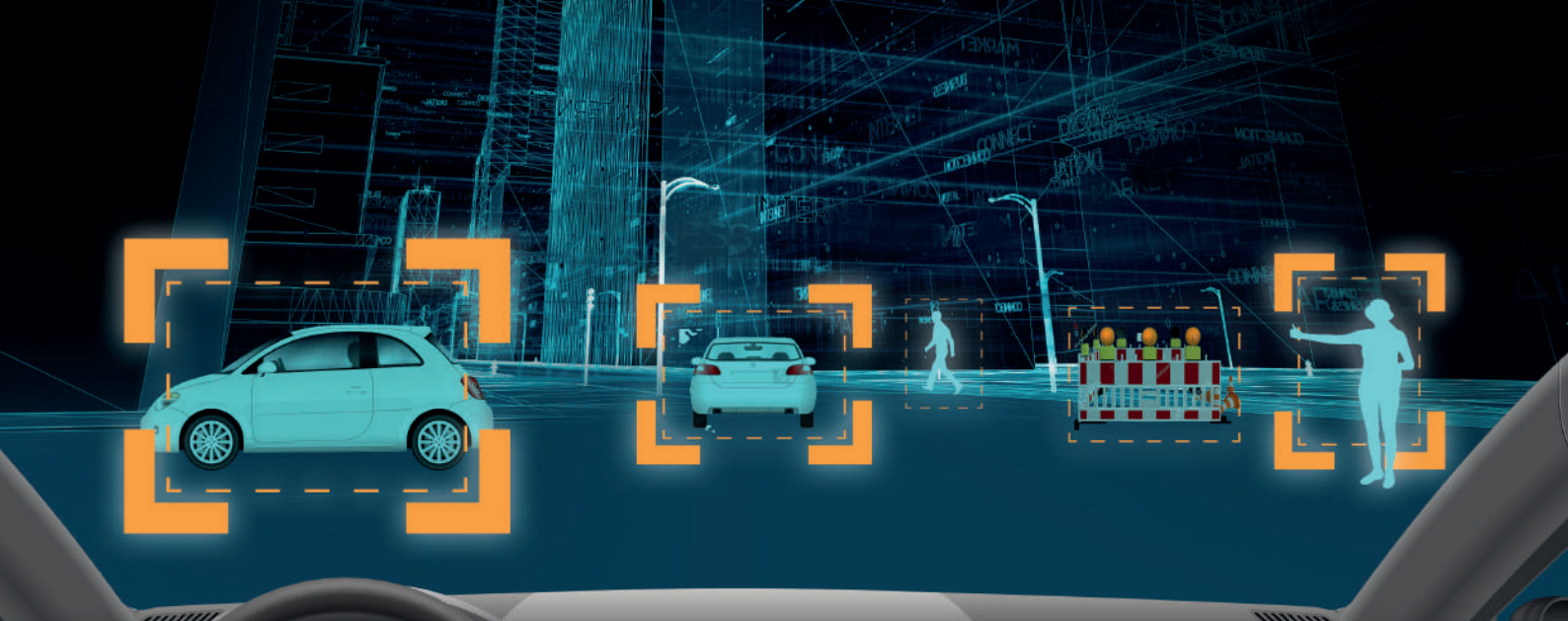
Welcome



Say

GOODBYE

to driving as you know it



Making Cars Smart.

- Motion detection
- Communication with transport infrastructure
- Speed and lane management

How about a car that can aid you to drive safely? A car that can keep the lane for you or limit your speed when needed? All this while it communicates seamlessly with the surrounding transport infrastructure to give you an unparalleled riding experience. Sounds too good to be true?

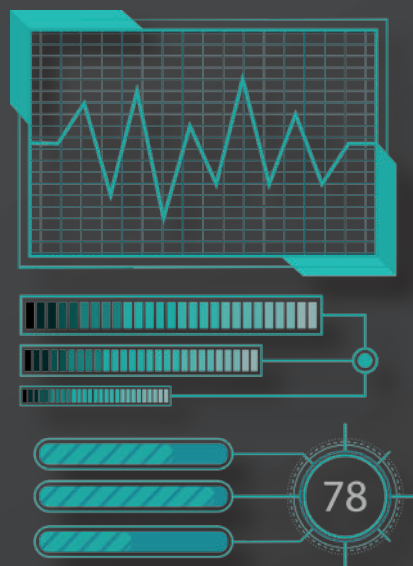
Well, that's our offer for you.

Smart Traffic Integration.

- _ Interact with Traffic signals, speeding cameras and lanes
- _ Report live data to authorities

We have gone above and beyond to ensure a safe and reliable service from our smart cars. Let the car take care of the monotonous actions of everyday driving, its intelligent Smart Traffic Integration system communicates with traffic signals, detect speed cameras and locate lanes to give you a highly optimized ride.

Live data collection further enhances security by sharing relevant information with the authorities.



Investment Protection – Future Ready.

- _ Enable self-driving feature
- _ Battery technology compatible
- _ Future software updates possible



The one thing that makes our cars truly future proof is their ability to undergo multiple iterations of software upgrades as the technology develops further.

Your investment remains timeless as future software updates will take the cars to a point where we start having truly self-driving capabilities. Ever evolving battery technology will make sure your car is provided with all the energy it needs to soar into the future with you.



Full Mobility.

- _ Charging Infrastructure
- _ Battery Swapping

Just being smart isn't quite enough though, right? What about mobility and freedom of exploration? Don't worry, we give have given our cars even more mobility than the petrol cars out there through a robust charging infrastructure and battery swapping checkpoints. You will never have to worry about open roads anymore.

Full control at your finger tips – wherever you are.

- _ Record car travel with maps
- _ All driving data

Own your car like never before. Our smart cars can record all your travels and keep a dedicated driving data log that you can access at any-time from anywhere. From current location to the last ride report everything is available at your fingertips.



Personal entertainment office manager.

- _ Personal schedule assistant
- _ Special app store

Just having a car that is only smart for riding is never enough. We believe in machines that further enhance your everyday life. With that in mind, our smart cars come with a personal assistant feature that will help you schedule your activities effortlessly.

For your entertainment, there is also an immersive video playback feature and a dedicated application store built-in to give you access to millions of apps with a multitude of features.



Conversationalist Cars.

- _ Inter-car communication
- _ Car sharing app

Our smart cars come with the ability to talk with each other and other devices. Running a transit service? Give your guests an app for them to ask for a lift and at a press of a button they are located instantly by the nearest smart car to be picked and dropped. It's only a matter of time before you see our cars transform themselves into fully personal chauffeurs.

In the case of any traffic violations or accidents, the car itself can generate status reports leaving no space for guesswork or other confusions.

Driving greener.

- _ Battery based Electric motor system

Your cars can be smart and eco-friendly at the same time. Our proprietary smart power management and electric-motor system will convert your existing car to a green machine with minimal part wastage.

